



Manufacturer: ekey biometric systems GmbH  
 Model: ekey (home, multi, net) converter LAN RS-485  
 Device Type: LAN RS-485 converter

### CONTACT SUPPORT:

COMPANY NAME:	M&M Computers, Romania
SUPPORT CONTACT:	Robert Rizea
EMAIL ADDRESS:	robert.rizea@mmc.ro
PHONE:	+40727770971
ADDRESS:	Romana Street No50 Ploiesti, Romania
NOTES:	

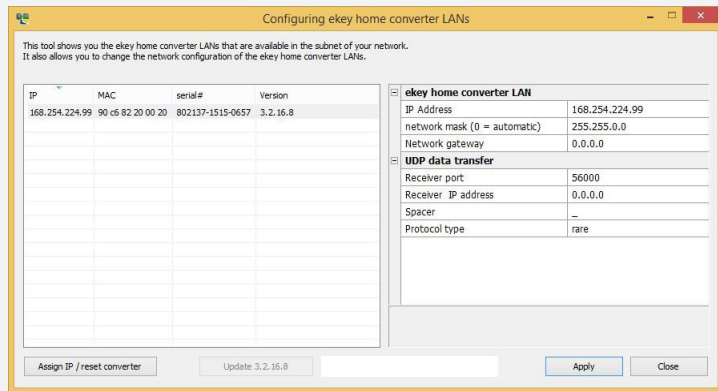
### GENERAL INFORMATION

SIMPLWINDOWS NAME:	Ekey CV LAN Connection.usp
CATEGORY:	Security
VERSION:	V1.0
SUMMARY:	The module is used to establish a data connection between Crestron processor and the ekey home, ekey multi or ekey net system.
GENERAL NOTES:	<p>For certain activities, the converter sends a defined data packet in the UDP protocol on the RS-485 bus via the Ethernet network. Data is transmitted in one direction from the ekey system to the receiver (Crestron processor), and never the other way round. The module receives data packet from ekey systems.</p> <p><b>Only one module is needed/allowed per converter.</b></p>
CRESTRON HARDWARE REQUIRED:	Crestron 2 or 3 series Processor.
SETUP OF CRESTRON HARDWARE:	The processor must be on the same network as the ekey converter LAN RS-485.
VENDOR FIRMWARE:	3.2.41.11 (home/multi variant), 3.2.41.2 (Net variant)

Manufacturer: ekey biometric systems GmbH  
 Model: ekey (home, multi, net) converter LAN RS-485  
 Device Type: LAN RS-485 converter

VENDOR SETUP:

CABLE DIAGRAM:



You can use the configuration tool to configure data packets and set their parameters. The following aspects must be set:

- The receiver port;
- The receiver IP address;
- The spacer;
- The protocol type;

**Receiver port and receiver IP address**

The receiver port and the receiver IP address define the receiver (data sink) uniquely on the network.

**Spacer and protocol type**

The spacer and the protocol type define the composition of the data packet. The receiver must be able to read and interpret the defined data packet.

Depending on the system you are using, there are four protocol types you can set.

The converter supports four protocol types for sending data packets over the Ethernet network:

- rare protocol:** Complex protocol for system developers who are incorporating an ekey system. The data is transferred in binary format. This protocol is the default setting.
- home protocol:** Simple protocol for automation technicians who are incorporating an ekey home system. The data is transferred in string format.
- multi protocol:** Simple protocol for automation technicians who are incorporating an ekey multi system. The data is transferred in string format.
- net protocol:** Simple protocol for automation technicians who are incorporating an ekey net system. The data is transferred in string format.

The individual data fields can be separated by means of a spacer. This character is defined in the settings. The spacer takes effect in the home, multi and net protocols.

**CONTROL:**



Manufacturer: ekey biometric systems GmbH  
 Model: ekey (home, multi, net) converter LAN RS-485  
 Device Type: LAN RS-485 converter

<u>Signal/Function Name</u>	<u>D,S,A</u>	<u>Digital, Serial, Analog signal property definition.</u>
EnableUDP	D	When is HIGH the UDP connection is enabled. When LOW disabled.

### FEEDBACK:

Connected	D	Status of UDP Socket.
Protocol_Out	A	The analog value that correspond to protocol (1- Net, 2-Home, 3-Multi, 4-Rare). This must be tied to the analog Input "Protocol" of "Ekey Control Panel" module.
To_Ekey_Controller	S	This must be tied to the serial Input "From_CVlan" of "Ekey Control Panel" module.
Spacer_Out	S	This must be tied to the serial Input "Spacer" of "Ekey Control Panel" module.
\$Connected_info	S	This will return connection info.

### PARAMETERS:

Protocol	A	Protocol Combo list selection: 1d - NET; 2d - Home; 3d - Multi; 4d - Rare;
UDP_Port	A	CV Lan Converter UDP port number.
UDP_Ip	A	CV Lan Converter IP Address
Spacer	S	Spacer Combo list selection: "%" - Percent sign, "=" - Equal sign, "\$" - Dollar sign, "/" - Slash, "?" - Question mark.

### TESTING:

OPS USED FOR TESTING:	MC3 1.502.3079.26076
SIMPL WINDOWS USED FOR TESTING:	v4.07.03
DEVICE DB USED FOR TESTING:	49.06.005.00
CRES DB USED FOR TESTING:	64.00.001.00
SYMBOL LIBRARY USED FOR TESTING:	1040



Manufacturer: ekey biometric systems GmbH  
Model: ekey (home, multi, net) converter LAN RS-485  
Device Type: LAN RS-485 converter

<b>SAMPLE PROGRAM:</b>	Ekey Univ Demo
<b>REVISION HISTORY:</b>	1